

Overview

Link fitting is used to link clamps to insulators, or to link insulator and ground wire clamp to tower arms or subsection structure.

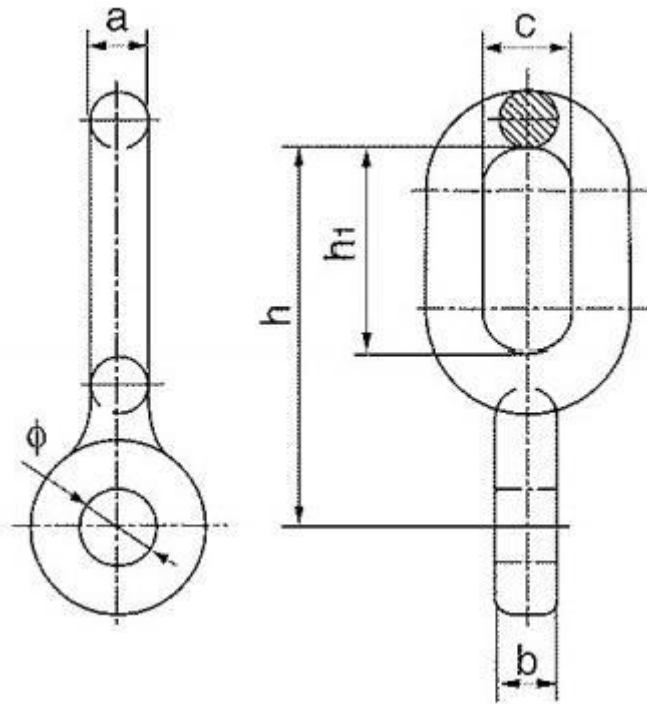
Link fitting has a special type and a common type in accordance with mounting conditions.

The special type includes the ball-eye and a socket clevis linking with an insulator. The common type is usually a pin-connected type.

They have different grades in according to the load and are exchangeable for the same grade.

Hot-dip galvanized steel.

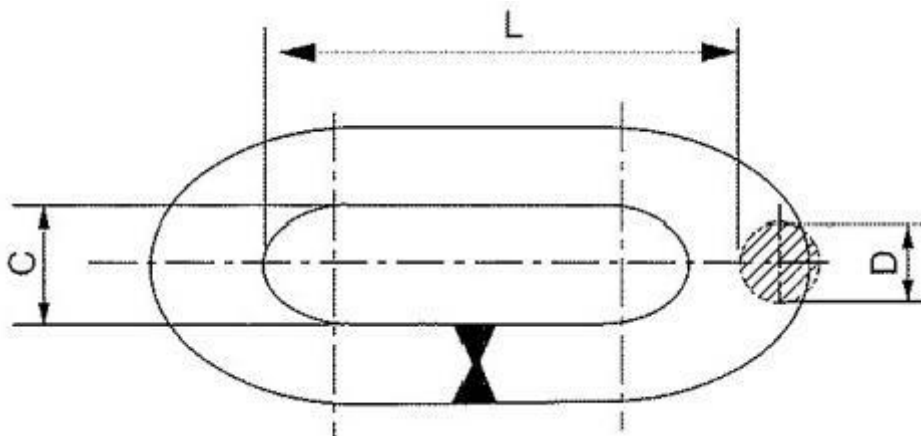
Eye Links (Type ZH)



Catalog No.	Dimensions(mm)						Rated Failure Load(kN)	Weight(kg)
	a	b	C	φ	h ₁	h		
ZH-7	16	16	24	20	57	95	70	0.5

Extension Links (Link Body Welded)

Hot-dip galvanized steel.

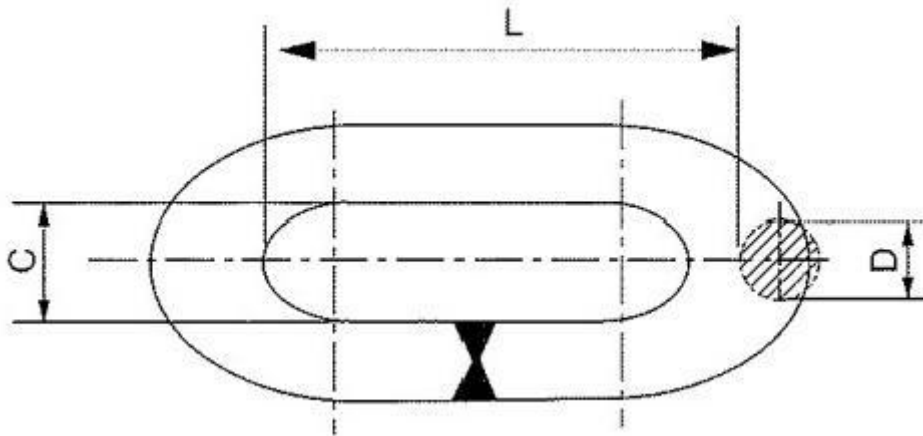


Catalog No.	Dimensions(mm)			Rated Failure Load(kN)	Weight(kg)
	C	D	L		
PH-7	20	16	80	70	0.4

PH-10	22	18	100	100	0.6
PH-10L	22	18	350	100	1.7
PH-12	24	20	120	120	0.9
PH-16	26	22	140	160	1.2
PH-20	30	24	160	200	1.6
PH-25	34	26	160	250	2
PH-30	38	30	180	300	3
PH-50	44	36	200	600	11.5

Extension Links(Link Body Whole-forged)

Hot-dip galvanized steel.



Catalog No.	Dimensions(mm)			Rated Failure load(kN)	Weight(kg)
	C	D	L		
PH-7.1	20	16	80	70	0.4
PH-10.1	22	18	100	100	0.6
PH-12.1	24	20	120	120	0.9
PH-16.1	26	22	140	160	1.5
PH~20.1	30	24	160	200	1.6
PH~-25.1	34	26	160	250	2
PH-30.1	38	30	180	300	3